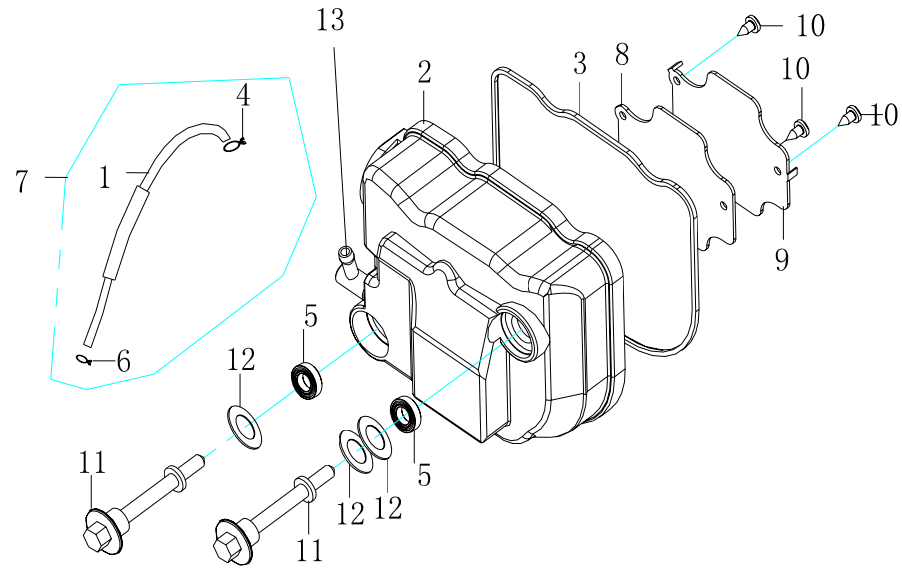


E-2

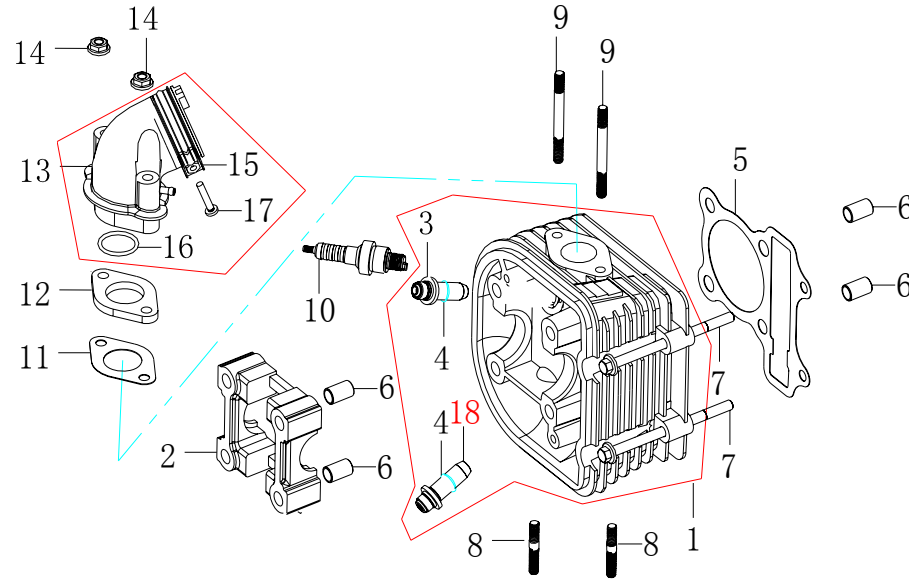
汽缸头盖组件
CYLINDER HEAD COVER



E-2 汽缸头盖组件--CYLINDER HEAD COVER

序号 REF NO.	技术代码 (PART NO.)	物料编码 (PART NO.)	名称	DESCRIPTION	单台用量 REGD NO.				备注(组件名称或代号) REMARK (COMPONENT NAME OR CODE)
2	122201040010	1222023201	汽缸头盖(普通)	CYLINDER COVER LID	1				
3	122201040040	1222020501	缸头盖T型垫圈	AIRPROOF RING	1				
5	122202000080	1271100601	油封组件(橡胶垫片)	OIL SEAL COMPONENTS	2				
7	122102060000	1221075101	废气管(长)	VENTILATION RUBBER TUBE COMPONENTS	1.0				
1	122102060010	1221075101	通气管	VENTILATION RUBBER TUBE	1				废气管(长)-VENTILATION RUBBER TUBE COMPONENTS
4	122102060020		锁紧圈8.5	LOCK RING 8.5	1				
6	122102060040		锁紧圈	LOCK RING	1				
8	122201040020	1222020201	汽缸头盖纸垫	AIRPROOF GASKET	1				
9	122201040030	1222023401	汽缸头盖板	LID BOARD	1				

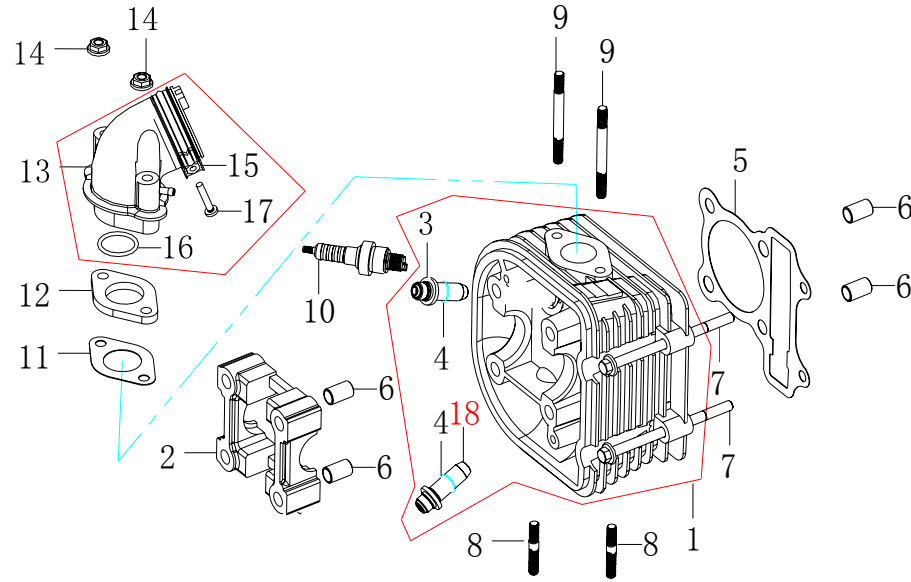
E-3
汽缸头
CYLINDER LID



E-3 汽缸头--CYLINDER LID

序号 REF NO.	技术代码 (PART NO.)	物料编码 (PART NO.)	名称	DESCRIPTION	单台用量 REGD NO.				备注(组件名称或代号) REMARK (COMPONENT NAME OR CODE)
1	127101011000	1271021401	气缸头	CYLINDER LID COMPONENTS	1				气缸头-CYLINDER LID COMPONENTS
3	122201011010		进气门导管	INLET DOOR CONDUIT	1				
4	GB3452.1-82.9518		O型Æ9.5*1.8	O-RING Æ9.5x1.8	2				
18	122201011040		排气门导管	EXIT DOOR CONDUIT	1				
2	122201000010	1271021501	支架	CAMSHAFT FIXING BASE	1				
5	127101000050	1271020501	气缸头垫(缸床)	CYLINDER LID GASKET	1				
6	122101000020	0002400502	定位销10x16	POSITIONING PIN 10×16	4				
7	122101000030	0002112101	六角法兰螺栓M6x100	BOLT M6×100	2				
8	GB900-88.0835	0002101201	双头螺柱M8x35	DUAL-HEAD STUD M8×35	2				

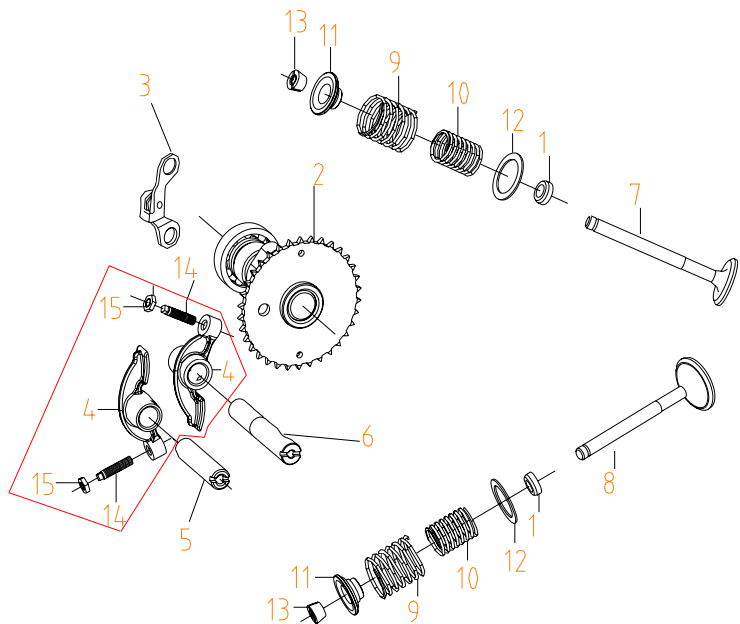
E-3
汽缸头
CYLINDER LID



E-3 汽缸头--CYLINDER LID

序号 REF NO.	技术代码 (PART NO.)	物料编码 (PART NO.)	名称	DESCRIPTION	单台用量 REGD NO.				备注(组件名称或代号) REMARK (COMPONENT NAME OR CODE)
9	GB900-88.0662	0002100601	双头螺柱M6x62	DUAL-HEAD STUD M6×62	2				
10	122110300000	1221450301	火花塞 A7RTC	SPARK PLUG	1				
11	122101010020	1221020601	隔热板纸垫	INLET TUBE GASKET	1				
12	122101010010	1221020701	隔热板	INLET TUBE HEAT INSULATION BOARD	1				
14	GB6177-86.06	0002204101	法兰面螺母M6	NUT M6	2				
13	122101030000	1221078301	进气管	INLET TUBE COMPONENTS	1				进气管-INLET TUBE
	122101030000	1221078304	进气管 (KOK)	INLET TUBE COMPONENTS (KOK)	1.0				

E-4
 凸轮轴·气门
 CAMSHAFT·VALVE



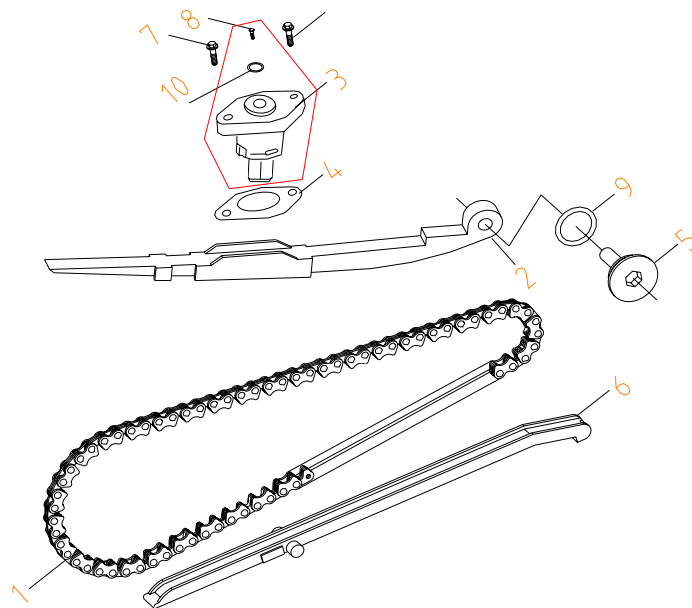
E-4 凸轮轴·气门--CAMSHAFT·VALVE

序号 REF NO.	技术代码 (PART NO.)	物料编码 (PART NO.)	名称	DESCRIPTION	单台用量 REGD NO.				备注(组件名称或代号) REMARK (COMPONENT NAME OR CODE)
1	122101012000	1221021401	气门油封组件	VALVE SHANK OIL SEAL COMPONENTS	2				
2	122204010000	1271020101	凸轮轴(普通)	CAMSHAFT SUB-PARTS	1				
3	122104010020	1221163601	止动板	LIMIT BOARD COMPONENTS	1				
5	122104080000	1221164401	进气摇臂轴	INLET DOOR ROCKER SHAFT COMPONENTS	1				
6	122104000090	1221164402	排气摇臂轴	EXHAUST DOOR ROCKER SHAFT	1				
7	122204000070	1222160701	进气门	INLET DOOR	1				
8	122204000030	1222160301	排气门	EXHAUST DOOR	1				
9	122204000040	1222160401	气门外弹簧	EXTERIOR VALVE SPRING	2				
10	122204000050	1222160501	气门内弹簧	INTERIOR VALVE SPRING	2				

E-5

配气链条·拉力杆

CAM CHAIN . TENSION

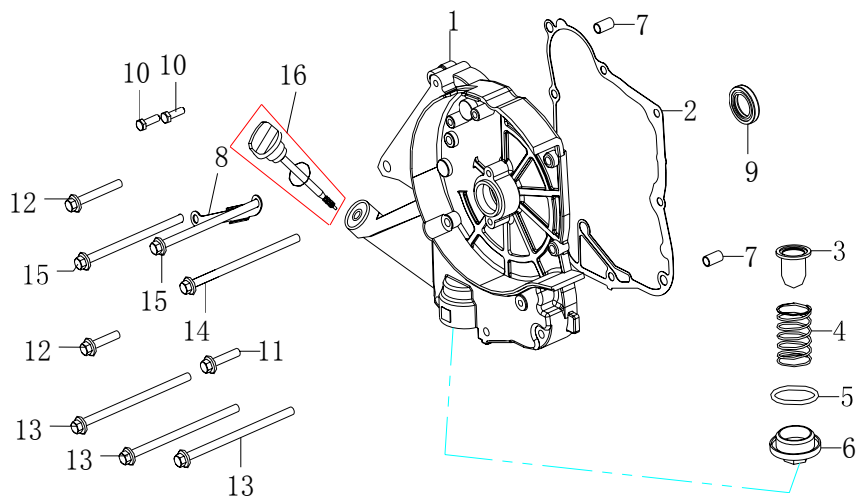


E-5 配气链条·拉力杆--CAM CHAIN . TENSION

序号 REF NO.	技术代码 (PART NO.)	物料编码 (PART NO.)	名称	DESCRIPTION	单台用量 REGD NO.				备注(组件名称或代号) REMARK (COMPONENT NAME OR CODE)
1	122204070000	1222163501	正时链条6.35×94	TIMING CHAIN 6.35×94	1				
2	122204040000	1221162303	拉力杆	TENSION BOARD COMPONENTS	1				
3	122104040000	1221162501	调整器	TENSIONER SHELL	1				
4	122104000080	1201160801	调整器纸垫	TENSIONER GASKET	1				
5	122104020010	0002137801	拉力杆螺栓	BOLT PIN	1				
6	122104050000	1221162305	链条导件	CHAIN GUIDE PLATE COMPONENTS	1				
7	GB5787-86.0622	0002111101	六角法兰螺栓M6X22	FLANGE BOLT M6×22	2				
8	122104040010	0002128301	十字盘头螺栓M6X6	BOLT M6X6	1				
9	122104020020	1131075401	O环15.2X1.5	O-RING 15.2×1.5	1				
10	GB1235-76.9515	1221021901	O型圈9.5X1.5	O-RING 9.5×1.5	1				

E-7

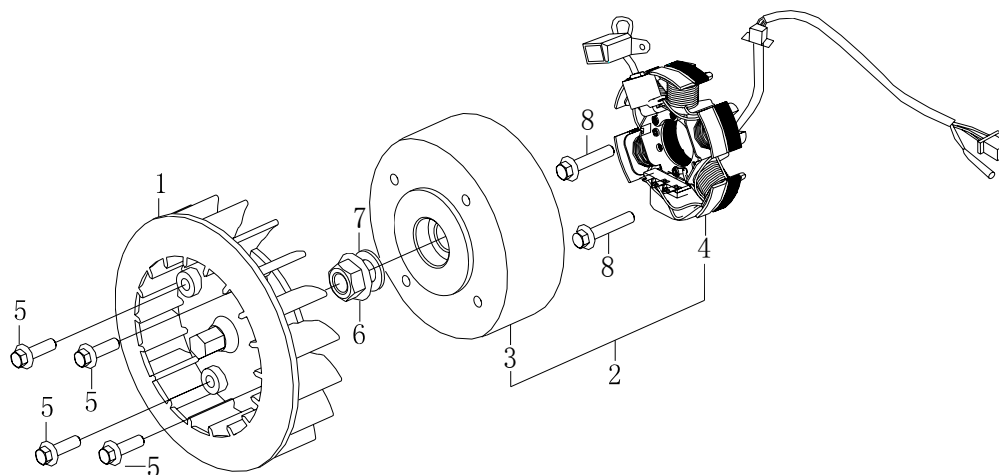
右曲轴箱盖
RIGHT CRANKCASE COVER



E-7 右曲轴箱盖--RIGHT CRANKCASE COVER

序号 REF NO.	技术代码 (PART NO.)	物料编码 (PART NO.)	名称	DESCRIPTION	单台用量 REGD NO.				备注(组件名称或代号) REMARK (COMPONENT NAME OR CODE)
1	122102030010	1221050410	右盖	RIGHT CRANKCASE LID	1				
2	122102000060	1221070501	右曲轴箱纸垫	RIGHT CRANKCASE LID GASKET	1				
3	122102031000	0002600601	滤油网	OIL SCREEN COMPONENTS	1				
4	122102030020	1221073801	滤油网弹簧	OIL SCREEN SPRING	1				
5	122102030030	1131075102	O型圈18×3	O-RING 18×3	1				
6	136204030040	1221074001	滤油网帽盖	OIL SCREEN CAP LID	1				
7	122102020010	0002401301	定位销8×14	POSITIONING PIN 8×14	2				
8	122102000110	1221702001	A. C. G线夹	TOUCH-AND-GO COIL PRESS WIRE RACK	1				
9	122102023000	1221072401	油封 19.8×30×5	OIL SEAL 19.8×30×5	1				

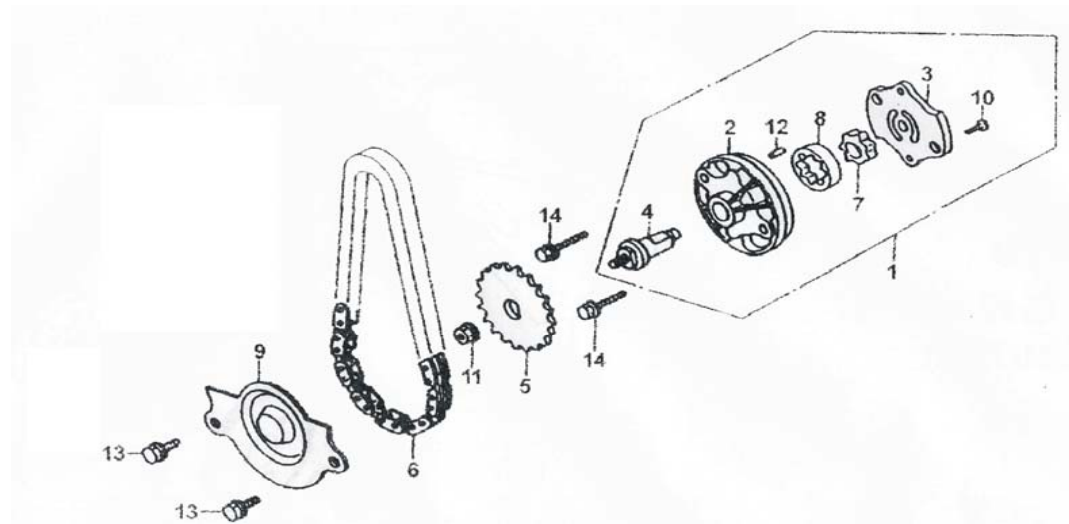
E-8
磁电机
GENERATOR



E-8 磁电机--GENERATOR

序号 REF NO.	技术代码 (PART NO.)	物料编码 (PART NO.)	名称	DESCRIPTION	单台用量 REGD NO.				备注(组件名称或代号) REMARK (COMPONENT NAME OR CODE)
1	122115020000	1222010901	冷却风扇	COLLING FAN	1				
2	122110200000		磁电机分总成	MAGNETOR SUB ASSEMBLY	1				3、4部件的总成
3	122110201000	1221450214	八极磁钢(交、直流)	ROTOR	1				
4	122110202000	1221450213	八极线圈(直流)	STATOR	1				
	122110204000	1221450212	八极线圈(交流)	STATOR	1				美国DOT/EPA
5	GB5787-86.0618	0002114401	六角法兰螺栓M6x18	FLANGE BOLT M6×18	4				
6	GB6177-86.12	0002204502	厚法兰面螺母M12X1.25	NUT M12	1				
7	GB97.1-85.12	0002303601	垫圈12X25X2	GASKET 12	1				
8	GB5787-86.0620	0002114601	六角法兰螺栓M6x20	FLANGE BOLT M6×20	2				

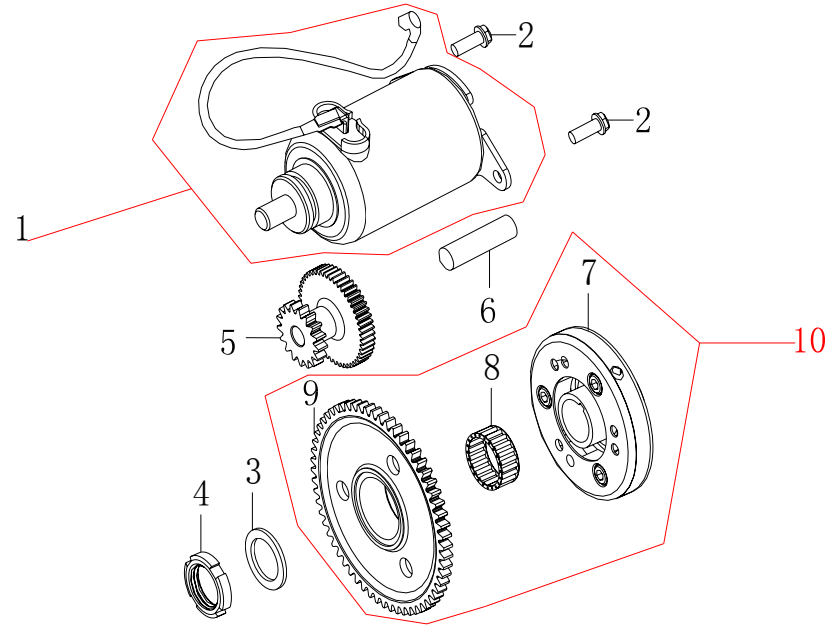
E-9
机油泵
OIL PUMP



E-9 机油泵--OIL PUMP

序号 REF NO.	技术代码 (PART NO.)	物料编码 (PART NO.)	名称	DESCRIPTION	单台用量 REGD NO.			备注(组件名称或代号) REMARK (COMPONENT NAME OR CODE)
1	122112020000	1221550302	机油泵	MACHINE OIL PUMP COMPONENTS	1			
2	122112020030	1221550302	机油泵体	MACHINE OIL PUMP BODY	1			机油泵-MACHINE OIL PUMP COMPONENTS
3	122112020040		机油泵盖	MACHINE OIL PUMP LID	1			
4	122112020060		机油泵轴	MACHINE OIL PUMP AXIS	1			
7	122111020020		机油泵内转子	OIL PUMP INNER ROTOR	1			
8	122112020010		机油泵外转子	OIL PUMP OUTER ROTOR	1			
10	GB818-85.0312		螺钉M3X12	SCREW, PAN 312	1			
12	122112020050		定位销4X6.5	PIN C, DOWEL 46.5	1			
5	122112020070	1221551001	机油泵链轮	MACHINE OIL PUMP CHAIN WHEEL	1			

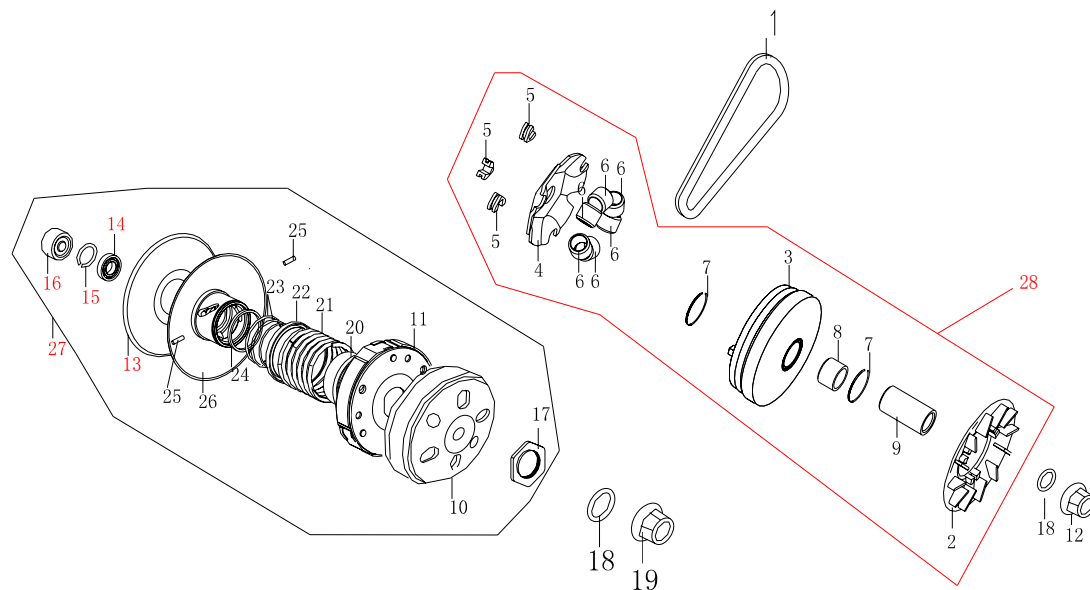
E-10
电起动机构
STARTING MOTOR



E-10 电起动机构--STARTING MOTOR

序号 REF NO.	技术代码 (PART NO.)	物料编码 (PART NO.)	名称	DESCRIPTION	单台用量 REGD NO.				备注(组件名称或代号) REMARK (COMPONENT NAME OR CODE)
1	122111010000	1221500301	起动电机	START MOTOR	1				
2	GB5787-86.0635	0002119401	六角法兰螺栓M6X35	HEXAGON ROUND CHAPTER BOLT M6×35	2				
3	122103000050	0002310601	离合器锁紧垫圈22X31X2	GASKET	1				
4	122103000040	0002203201	锁紧螺母M22X1	LOCK TIGHT NUT M22	1				
5	122111000010	1221500101	减速齿轮	ELECTRICAL-START SLOWDOWN WHEEL	1				
6	122111000020	1221500201	减速齿轮轴	ELECTRICAL-START SLOWDOWN WHEEL SHAFT	1				
10	122111020000	1221500402	超越离合器	CLUTCH COMPONENTS	1				
7	122111021000	1221500402	离合器外罩	CLUTCH WRAP	1				超越离合器-CLUTCH COMPONENTS
8	122111023000		滚针轴承	NEEDLE BEARING	1				
9	122111022000		起动离合器齿轮	START CLUTCH WHEEL	1				

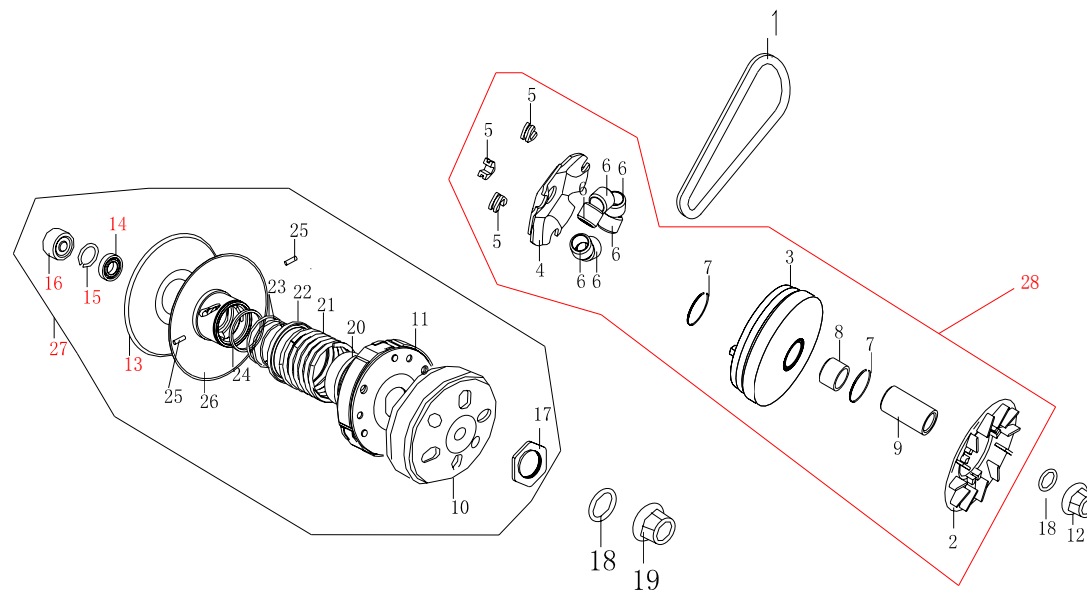
E-11
传动系-1
TRANSMISSION-1



E-11 传动系-1--TRANSMISSION-1

序号 REF NO.	技术代码 (PART NO.)	物料编码 (PART NO.)	名称	DESCRIPTION	单台用量 REGD NO.			备注(组件名称或代号) REMARK (COMPONENT NAME OR CODE)
1	127105000060	1271020301	驱动皮带(加长)	DRIVE STRAP	1			
28	122105050000	1221204801	主动轮总成	DRIVING WHEEL COMPONENTS	1			
2	122105000040	1221204801	叶扇驱动盘	FAN DRIVE DISK	1			主动轮总成-DRIVING WHEEL COMPONENTS
3	122105061000		滑动式驱动盘组件	SLIP DRIVE DISK COMPONENTS	1			
4	122105060020		斜坡板	SLOPE BOARD	1			
5	122105060010		斜坡板滑块	SLOPE BOARD SLIP BLOCK	3			
6	122105062000		配重滚珠组件	COUNTER WEIGHT BALL BEARING COMPONENTS	6			
7	122105061030		挡圈28	BLOCK RING 28	2			
8	122105061020		滑动式驱动盘衬套	SLIP DRIVE DISK BUSH	1			
9	122105000070		衬套	BUSH	1			

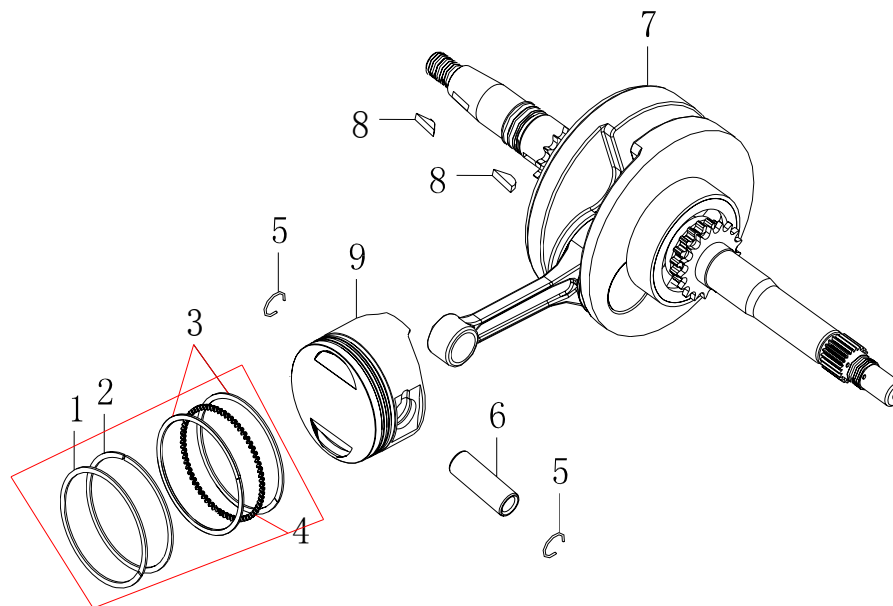
E-11
 传动系-1
 TRANSMISSION-1



E-11 传动系-1--TRANSMISSION-1

序号 REF NO.	技术代码 (PART NO.)	物料编码 (PART NO.)	名称	DESCRIPTION	单台用量 REGD NO.			备注(组件名称或代号) REMARK (COMPONENT NAME OR CODE)
27	122105040000	1221201501	从动轮总成	FOLLOWER WHEEL COMPONENTS	1			
10	122105050000	1221201501	离合器外壳组件	CLUTCH SHELL COMPONENTS	1			从动轮总成-FOLLOWER WHEEL COMPONENTS
11	122105043000		被动无极变速盘组件	PASSIVE STEPLESS SHIFT DISK COMPONENTS	1			
13	122105043500		从动皮带盘	DRIVEN STRAP DISK	1			
14	122105040090		滚动轴承	NEEDLE BEARING	1			
15	122105040100		挡圈28	BLOCK RING 28	1			
16	122105040070		滚针轴承	NEEDLE BEARING	1			
17	122105040060		特殊螺母M28	SPECIAL NUT M28	1			
20	122105040030		套筒	SLEEVE	1			
21	122105040020		驱动弹簧	DRIVEN SPRING	1			

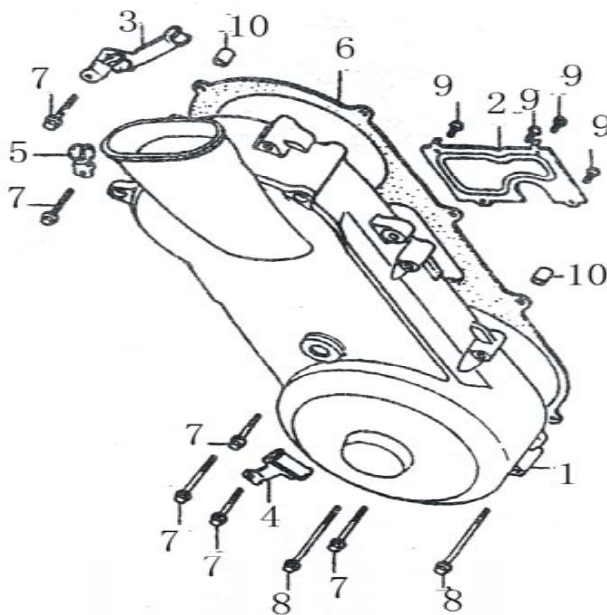
E-12
曲轴·活塞
CRANKSHAFT. PISTON



E-12 曲轴·活塞--CRANKSHAFT.PISTON

序号 REF NO.	技术代码 (PART NO.)	物料编码 (PART NO.)	名称	DESCRIPTION	单台用量 REGD NO.				备注(组件名称或代号) REMARK (COMPONENT NAME OR CODE)
1	127103010050	1271100501	第一道活塞环	FRIST PISTON RING	1				活塞环-PISTON RING
2	127103010040		第二道活塞环	SECOND PISTON RING	1				
3	127103010030		油环挡圈	OIL RING BLOCK RING	2				
4	127103010020		油环	OIL RING	1				
5	127103000010	0002310701	活塞销夹	PISTON PIN BLOCK RING	2				
6	127103000020	1271100201	活塞销	PISTON PIN	1				
7	127103020000	1271021301	曲轴11.2	CRANKSHAFT	1				
8	122103000030	0002700201	半圆键4X14	WOODRUFF KEY	2				
9	127103010010	1271100401	活塞	PISTON	1				

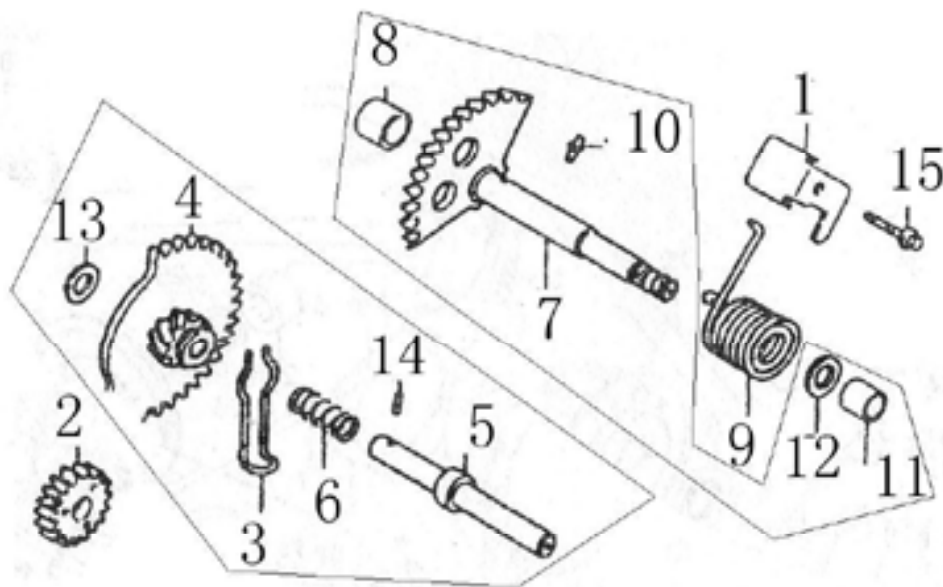
E-14
左曲轴箱盖
LEFT CRANKCASE COVER



E-14 左曲轴箱盖--LEFT CRANKCASE COVER

序号 REF NO.	技术代码 (PART NO.)	物料编码 (PART NO.)	名称	DESCRIPTION	单台用量 REGD NO.				备注(组件名称或代号) REMARK (COMPONENT NAME OR CODE)
1	127102040020	1221054710	左曲轴箱盖	LEFT CRANKCASE LID	1				
2	122102040010	1221074601	通气导板	VENTILATION GUIDE PLATE	1				
3	122102000100	1221070301	节流导线夹	CLAMPER THROTTLE CABLE	1				
4	122102000010	1221070101	刹车导线夹	CLAMPER BRAKE CABLE	1				
5	122102000030	1221163701	溢流线夹	CLAMPER BREATHER DRAIN TUBE	1				
6	127102000090	1221070601	左盖纸垫	GASKKETL COVER	1				
7	GB5787-86.0640	0002116701	六角法兰螺栓M6X40	BOLT FLANGE 6X40	6				
8	GB5787-86.0665	0002111801	六角法兰螺栓M6X65	BOLT FLANGE 6X65	2				
9	GB845-85.4008	0002128101	自攻螺钉 4×8	SCREW TAPPING ST4X8	4				
10	122102020010	0002401301	定位销 8X14	POSITIONING PIN 8X14	2				

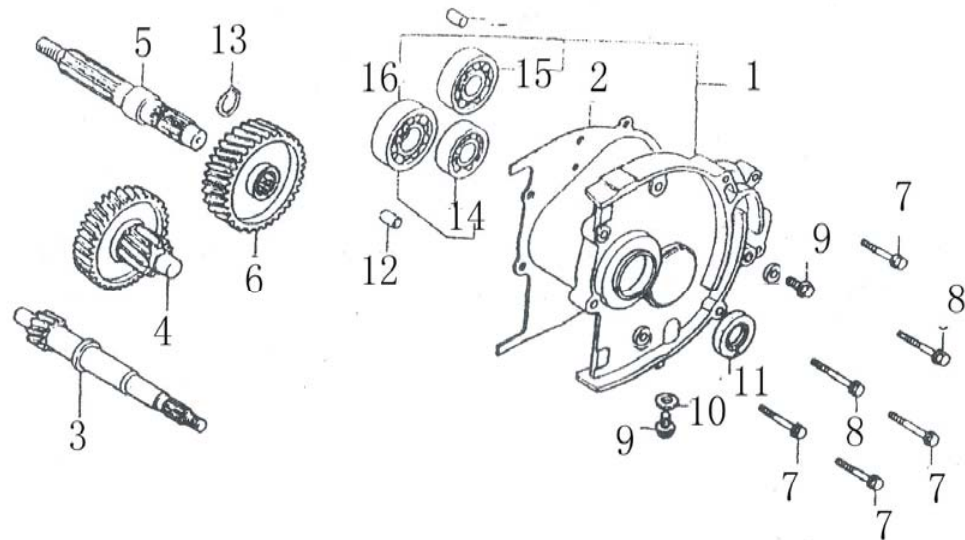
E-15
反冲起动机构
DRIVE PULLEY



E-15 反冲起动机构-- DRIVE PULLEY

序号 REF NO.	技术代码 (PART NO.)	物料编码 (PART NO.)	名称	DESCRIPTION	单台用量 REGD NO.				备注(组件名称或代号) REMARK (COMPONENT NAME OR CODE)
1	122106000010	1221702401	启动杆制止板	START SHAFT RECOVERY LIMIT BOARD	1				
2	122106000070	1221250601	从动齿轮	START DRIVEN GEAR	1				
4	122106010000	1221251601	惰齿轮	START IDLE GEAR COMPONENTS	1				惰齿轮-START IDLE GEAR COMPONENTS
3	122106010030		起动摩擦弹簧	START FRICTION SPRING	1				
5	122106010020		起动惰性驱动轴	START IDLE DRIVE SHAFT	1				
6	122106010040		驱动轴弹簧	DRIVE SHAFT SPRING	1				
13	122106010010		垫圈12.5	GASKET 12.5	1				
14	GB119-86.038		销3X8	PIN 3X8	1				
15	GB5787-86.0614	0002114101	六角法兰螺栓M6X14	FLANGE BOLT M6×14	1				

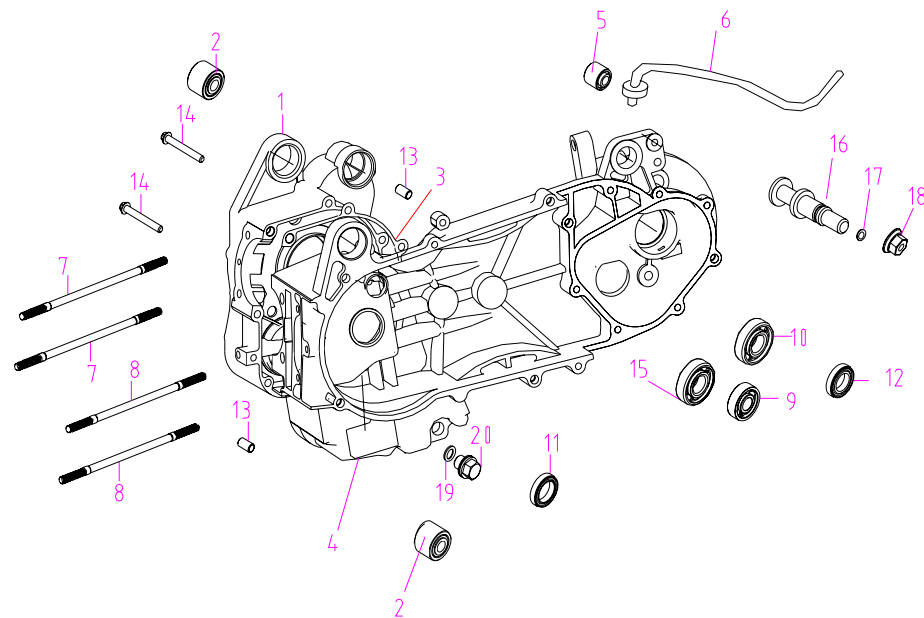
E-16
后传动系
UNDER TRANSMISSION



E-16 后传动系--UNDER TRANSMISSION

序号 REF NO.	技术代码 (PART NO.)	物料编码 (PART NO.)	名称	DESCRIPTION	单台用量 REGD NO.				备注(组件名称或代号) REMARK (COMPONENT NAME OR CODE)
1	122102050010	1221050610	主轴盖	GEAR CASE LID COMPONENTS	1				
2	122102050020	1221070701	后传动箱/变速箱端盖垫片	GEAR CASE LID AIRPROOF PAD	1				
3	122105020000	1221201002	驱动轴(剃齿)	DRIVE PRINCIPLE AXIS	1				
4	122105010000	1221200802	付轴组(剃齿)	DRIVE COUNTERSHAFT COMPONENTS	1				
5	127105000010	1221200103	输出轴长195	FINAL AXIS	1				输出轴长195-FINAL AXIS
13	122105000030		挡圈20	BOLCK RING 20	1				
6	122105000020	1221200201	最终齿轮	FINAL GEAR	1				
7	GB5787-86.0628	0002116001	六角法兰螺栓M6X28	FLANGE BOLT M6×28	3				
8	GB5787-86.0635	0002119401	六角法兰螺栓M6X35	FLANGE BOLT M6×35	3				

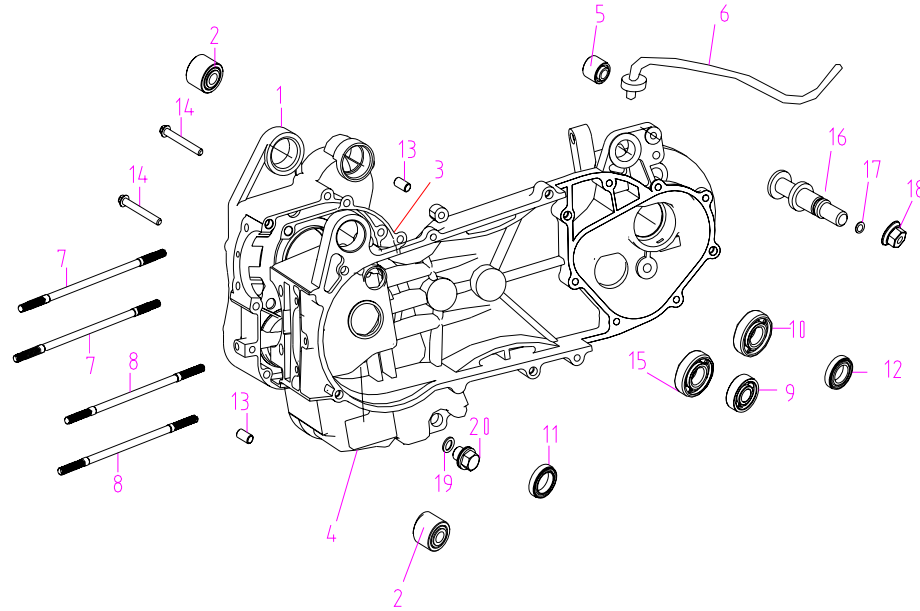
E-17
曲轴箱
CRANKCASE



E-17 曲轴箱--CRANKCASE

序号 REF NO.	技术代码 (PART NO.)	物料编码 (PART NO.)	名称	DESCRIPTION	单台用量 REGD NO.				备注(组件名称或代号) REMARK (COMPONENT NAME OR CODE)
1	127102020000	1271050110	右箱	RIGHT CRANKCASE COMPONENTS	1				
2	122102022010	1221078002	吊架衬套(前减震套) 28X10X22	FRONT ABSORBING COVER	2				
3	122102000070	1221070801	曲轴箱纸垫	CLOSING BOX AIRPROOF PAD	1				
4	127102011000	1271050810	左箱	LEFT CRANKCASE COMPONENTS	1				
5	122102025000	1221072302	后减震套(20X10X19.5/17)	BACK ABSORBING COVER	1				
6	122102050030	1221075201	通气管组件	VENTILATION TUBE COMPONENTS	1				
7	122202010010	0002102101	B长螺柱M8X199(双头)	DUAL-HEAD STUD M8×199	2				
8	122202020040	0002102201	A长螺柱M8X208.5(双头)	DUAL-HEAD STUD M8×208.5	2				
9	GB276-89.6301	1221075702	轴承6301	BEARING 6301	1				
10	GB276-88.6004-2RS	1221075902	轴承6004-2RS	BEARING 6004-2RS	1				

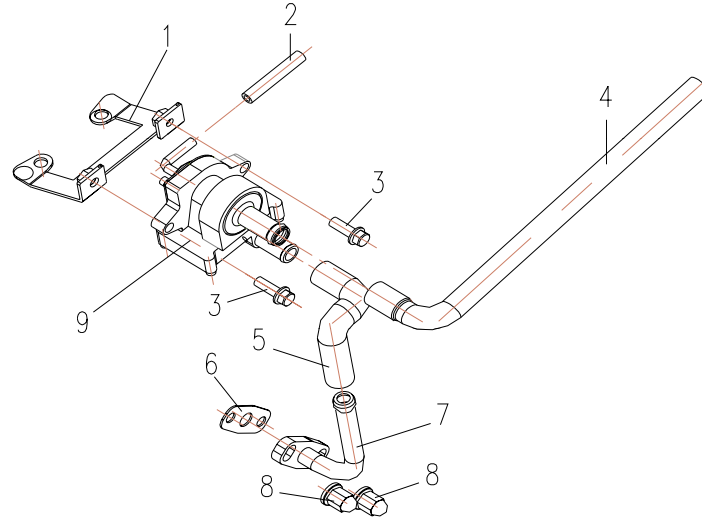
E-17
曲轴箱
CRANKCASE



E-17 曲轴箱--CRANKCASE

序号 REF NO.	技术代码 (PART NO.)	物料编码 (PART NO.)	名称	DESCRIPTION	单台用量 REGD NO.				备注(组件名称或代号) REMARK (COMPONENT NAME OR CODE)
11	122102023000	1221072401	油封19.8X30X5	OIL SEAL19.8×30×5	1				
12	122102023000	1221072801	油封27X42X7	OIL SEAL 27×42×7	1				
13	122102020010	0002401301	定位销8X14	POSITIONING PIN 8×14	2				
14	GB5787-86.0650	0002111501	六角法兰螺栓M6X50	FLANGE BOLT M6×50	2				
15	GB276-89.6002	1221076101	轴承6002	BEARING 6002	1				
16	122102020050	0002402501	刹车固定销	BRAKE DRUM POSITIONING PIN	1				
17	GB3452.1.7515	1131073701	O型圈7.5X1.5	O-RING 7.5X1.5	1				
18	GB6177-86.08	0002202701	自锁螺母M8	FLANGE NUT	1				
19	GB97.1-85.12	0002307703	铝垫圈12	GASKET 12	1				
20	GB6177-86.12125	0002104401	放油螺栓M12X1.25X15	OIL-DISCHARGE BOLT	1				

E-18
二次补气
TWO TIME RESTORES
VITAL ENERGY



E-18 二次补气--TWO TIME RESTORES VITAL ENERGY

序号 REF NO.	技术代码 (PART NO.)	物料编码 (PART NO.)	名称	DESCRIPTION	单台用量 REGD NO.				备注(组件名称或代号) REMARK (COMPONENT NAME OR CODE)
1	127102000080	1272071601	补气阀支架	AERATION VAVLE BRACKET	1				
2	127218010010	12721801001	负压管1	POSITIVE PRESSRE TUBE 1	1				
3	GB5787-86.0616	0002114301	法兰螺栓M6×16	BOLT M6×16	2				
4	127118020010	12711802001	管5	PIPE 5	1				
5	127218030010	12721803001	管4	PIPE 4	1				
6	113101040080	1131020301	二次补气纸垫(小)	TWO TIME RESTORES VITAL ENERGY GASKET	1				
7	127101050000	1272070201	通气铁管	INLET SYPHON	1				
8	113101000070	0002204201	盖型螺母	NUT	2				
9	156FMI-4V	1261650802	二次补气阀	AERATION VAVLE	1				

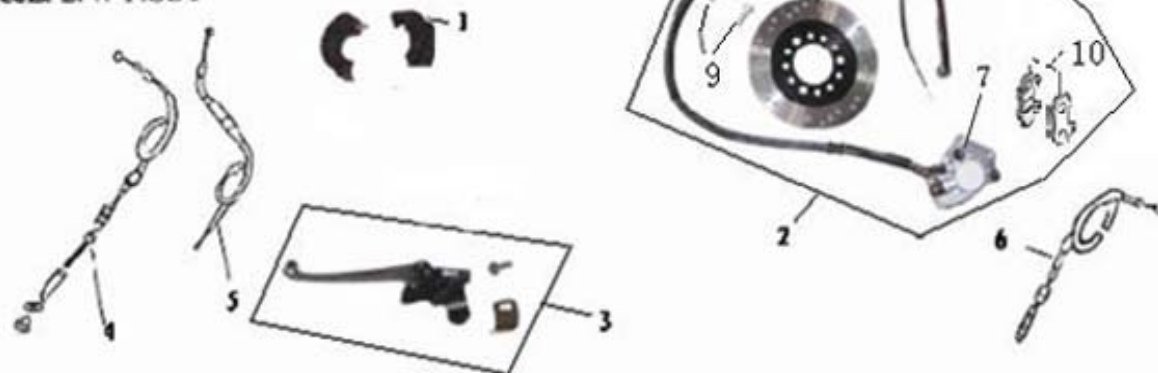
F-1
侧盖
SIDE COVER



F-1 侧盖--SIDE COVER

序号 REF NO.	技术代码 (PART NO.)	物料编码 (PART NO.)	名称	DESCRIPTION	单台用量 REGD NO.				备注(组件名称或代号) REMARK (COMPONENT NAME OR CODE)
1	61410		左侧盖(KQ)	LEFT SIDE COVER	1				
2	61411		右侧盖(KQ)	RIGHT SIDE COVER	1				
3	61446		(后)右通风(盖)板	RIGHT VENTILATION COVER	1				一代烤漆\二代不烤漆
4	61445		(后)左通风(盖)板	LEFT VENTILATION COVER	1				一代烤漆\二代不烤漆
5	61448		右下边条(KQ)	RIGHT LOWER EDGE BAR	1				
6	61447		左下边条(KQ)	LEFT LOWER EDGE BAR	1				
7	61449		后装饰(盖)板(KQ)	BACK DECORATION BOARD	1				
8	61301-01		座垫锁	SEAT CUSHION LOCK	1				61301(套锁)-IGNITION SWITCH
9	520304000		夹片	CLIPS	6				
10	040148012B		自攻螺钉ST4.8×12	SELF-ATTACK BOLT ST4.8×12	6				
11	040142016B		自攻螺钉ST4.2×16	SELF-ATTACK BOLT ST4.2×16	6				
12	010506016		法兰螺栓M6×16	FLANGE BOLT M6×16	4				
13	040142016B		自攻螺钉ST4.2×16	SELF-ATTACK BOLT ST4.2×16	2				

F-2
左、右闸把
R&L S/W ASSY



F-2 左右闸把--R&L S/W ASSY

序号 REF NO.	技术代码 (PART NO.)	物料编码 (PART NO.)	名称	DESCRIPTION	单台用量 REGD NO.			备注(组件名称或代号) REMARK (COMPONENT NAME OR CODE)
1	61107		油门固定座	THROTTLE FIXING BASE	1			
2	61119(后面分解)		前碟刹总成(不带ABS)	DISK ASSEMBLY	1			
	61119A(后面分解)		前碟刹总成(带ABS)	DISK ASSEMBLY	1			
7	61119-01		前碟刹泵(不带ABS)	BRAKE CALIPER	1			
	61119A-01		前碟刹泵(带ABS)	BRAKE CALIPER	1			
	61119B-01		前碟刹泵(双缸)	BRAKE CALIPER	1			
8	61119-02	61119-02	前碟刹盘	BRAKE DISK	1			前碟刹盘-BRAKE DISK
9	61119-03		碟刹盘螺钉	BRAKE DISK BOLT	3			
3	61105		左闸把座二代	LEFT BRAKE HANDLE BASE	1			
4	61605		后刹线	BACK BRAKE WIRE	1			
5	61602		油门线	THROTTLE WIRE	1			
6	61603		里程表软轴	ODOMETER SOFT AXIS	1			
10	61119-01-01		前制动摩擦片	FRONT BRAKE FRICTION PIECE	2			

F-3

主侧支架·起动踏杆

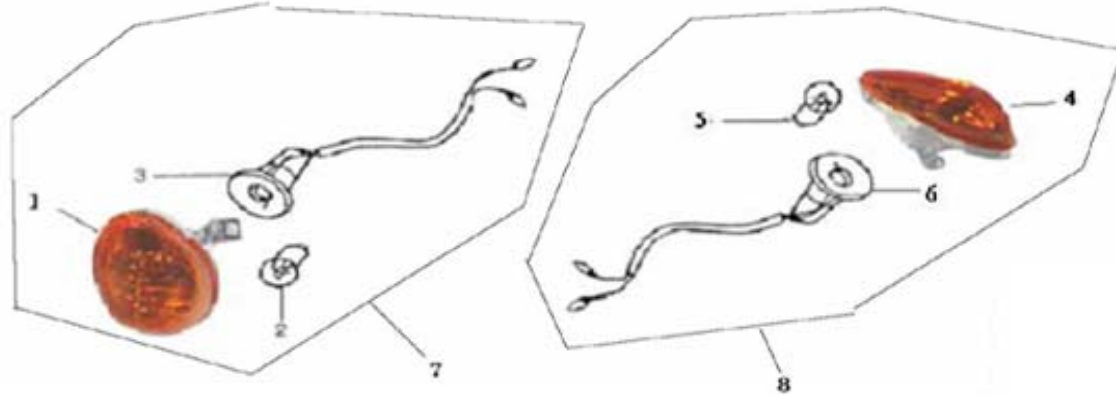
Kick Start Arm·Stand



F-3 主侧支架、起动踏杆-KICK START ARM.STAND

序号 REF NO.	技术代码 (PART NO.)	物料编码 (PART NO.)	名称	DESCRIPTION	单台用量 REGD NO.			备注(组件名称或代号) REMARK (COMPONENT NAME OR CODE)
1	61002	1271100701	起动臂组件	START ARM COMPONENTS	1			发动机厂领
2	010506030A		法兰螺栓M6×30	FLANGE BOLT M6×30	1			
3	61128		主支架	PRIMARY BRACKET	1			
4	11129		主支架弹簧(双)	PRIMARY BRACKET SPRING	1			
5	550210008		主支架衬套	GASKET	2			
6	47506		主支架橡皮	PRIMARY BRACKET SHOCK ABSORBING RUBBER	1			
7	010510025A		法兰螺栓M10×1.25×25	FLANGE BOLT M10×1.25×25	2			
8	010506030A		法兰螺栓M6×30	FLANGE BOLT M6×30	1			
9	61130		侧支架	SIDE BRACKET	1			
10	11131		侧支架弹簧(双)	SIDE BRACKET SPRING	1			
11	47327		侧支架熄火开关(圆)	SIDE BRACKET CHOKE	1			
12	510410035		侧支架螺栓	SIDE BRACKET BOLT	1			
13	010506016		法兰螺栓M6×16	FLANGE BOLT M6×16	1			

F-4
前转向灯
TURNING SIGNAL LIGHT



F-4 前转向灯-TURNING SIGNAL LIGHT

序号 REF NO.	技术代码 (PART NO.)	物料编码 (PART NO.)	名称	DESCRIPTION	单台用量 REGD NO.			备注(组件名称或代号) REMARK (COMPONENT NAME OR CODE)
1	61303-01-01	61303-01	左转向灯罩	TURNING LIGHT FL COVER	1			前左转向灯-TURNING LIGHT FL
2	61303-03		灯泡12V10W	BULB	1			
3	61303-01-02		灯座	LAMP HOLDER	1			
4	61303-02-01	61303-02	右转向灯罩	TURNING LIGHT FR COVER	1			前右转向灯-TURNING LIGHT FR
5	61303-03		灯泡12V10W	BULB	1			
6	61303-02-02		灯座	LAMP HOLDER	1			
7	61303-01		前左转向灯(二代认证)	TURNING LIGHT FL	1			
8	61303-02		前右转向灯(二代认证)	TURNING LIGHT FR	1			
	61303B-01		前左转向灯(二代普通)	TURNING LIGHT FL	1			
	61303B-02		前右转向灯(二代普通)	TURNING LIGHT FR	1			
	61303A-01		前左转向灯(一代普通)	TURNING LIGHT FL	1			
	61303A-02		前右转向灯(一代普通)	TURNING LIGHT FR	1			
2\5	61303-03		灯泡12V10W	BULB	2			

F-5
前置物箱
FRONT BOX



F-5 前置物箱-FRONT BOX

序号 REF NO.	技术代码 (PART NO.)	物料编码 (PART NO.)	名称	DESCRIPTION	单台用量 REGD NO.				备注(组件名称或代号) REMARK (COMPONENT NAME OR CODE)
1	61408		前置物箱	FRONT DEPOSIT COMPARTMENT	1				
2	61409		前置物箱盖	FRONT DEPOSIT COVER	1				
3	61301-02		前置物箱锁	FRONT DEPOSIT COMPARTMENT LOCK	1				61301(套锁)-IGNITION SWITCH
4	61432		头盔挂钩	HELMET LOCK HOOK	1				
5	61413		车架号码盖	FRAME NUMBER LID	1				
6	040142016B		自攻螺钉ST4. 2×16	SELF-ATTACK BOLT ST4. 2×16	6				
7	040148016B		自攻螺钉ST4. 8×16	SELF-ATTACK BOLT ST4. 8×16	4				
8	020306000		法兰螺母M6	FLANGE NUT M6	1				
9	520304000		夹片	CLIPS	2				

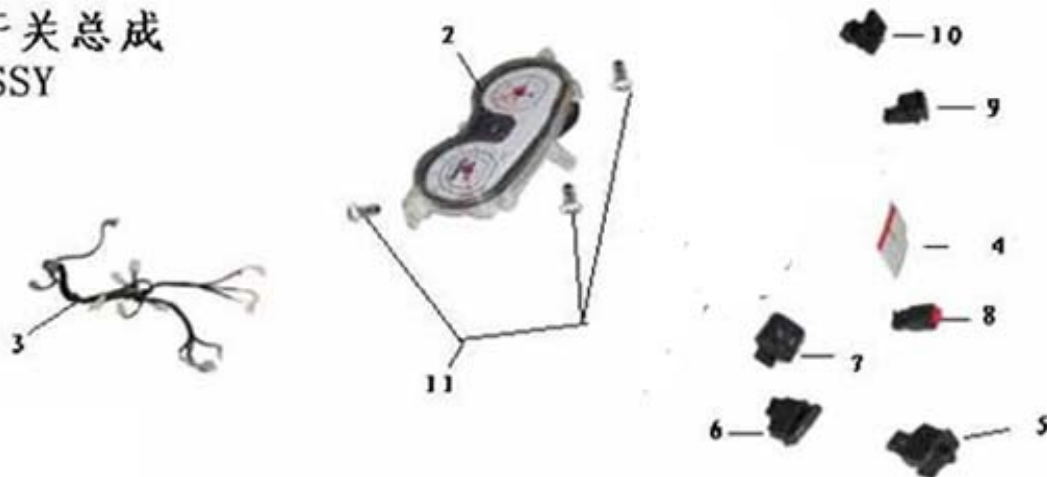
F-8
油箱
FUEL TANK



F-8 油箱-FUEL TANK

序号 REF NO.	技术代码 (PART NO.)	物料编码 (PART NO.)	名称	DESCRIPTION	单台用量 REGD NO.				备注(组件名称或代号) REMARK (COMPONENT NAME OR CODE)
1	61124		油箱总成	FUEL TANK	1				
2	61125	61125	油箱盖(铬)	FUEL TANK COVER	1				油箱盖(铬)-FUEL TANK COVER
6	61125-01		油箱盖密封圈	FUEL TANK COVER AIPROOF RING	1				
3	61333	61333	油位传感器二代	OIL LEVEL SENSOR	1				油位传感器二代-OIL LEVEL SENSOR
4	61333-02		油位传感器密封圈	OIL LEVEL SENSOR AIPROOF RING	1				
5	61333-01		油位传感器卡圈	OIL LEVEL SENSOR CLIP RING	1				
7	47126		油开关	OIL SWITCH	1				
8	11509		输油管	FULE LINE	115mm				
9	11510		负压管	POSITIVE PRESSURE TUBE	270mm				
10	11151		油管卡簧	OIL TUBE CLIP SPRING	4				

F-9
仪表、开关总成
METER ASSY



F-9 仪表、开关总成-METER ASSY

序号 REF NO.	技术代码 (PART NO.)	物料编码 (PART NO.)	名称	DESCRIPTION	单台用量 REGD NO.				备注(组件名称或代号) REMARK (COMPONENT NAME OR CODE)
2	61310		仪表二代	INSTRUMENT	1				
	61310A		仪表(一代)	INSTRUMENT	1				
	61310C		仪表(含转速)DOT车用	INSTRUMENT	1				
	61310D		仪表(含转速)摩多专用	INSTRUMENT	1				
3	61321-02		副电缆二代	SECONDARY CABLE	1				
4	61720		仪表罩贴花	INSTRUMENT COVER APPLIQUE	1				
5	61316		转向开关二代	VEER LIGHT SWITCH	1				
6	61315		喇叭开关二代	HORN SWITCH	1				
7	61318		变光开关二代	DIMMER SWITCH	1				
8	61320		警示灯开关二代	PARKING LIGHT SWITCH	1				
9	61317		启动开关二代	START SWITCH	1				
10	61314		大灯开关二代	HEADLIGHT SWITCH	1				
11	040142013A		自攻螺钉ST4.2×1	SELF-ATTACK BOLT ST4.2×13	3				

F-11
座垫
SEAT CUSHION



F-11 座垫-SEAT CUSHION

序号 REF NO.	技术代码 (PART NO.)	物料编码 (PART NO.)	名称	DESCRIPTION	单台用量 REGD NO.				备注(组件名称或代号) REMARK (COMPONENT NAME OR CODE)
1	61147	61147	座垫总成(不带拉带)	SEAT CUSHION	1				座垫总成-SEAT CUSHION
3	GB5787-86		法兰螺栓M6×12	FLANGE BOLT M6×12	1				
4	61147-02		座垫安装销轴	SEAT CUSHION INSTALLATION PIN AXIS	1				
5	61147-03		密封圈	AIRPROOFRING	2				
	61147B	61147B	座垫总成(摩多专用)	SEAT CUSHION	1				
2	61423		后置物箱	BACK STORAGE COMPARTMENT	1				
6	61451		后货架盖饰板(KQ)	BACK CARGO RACK COVER BOARD	1				
7	61149		后货架	BACK CARGO RACK	1				
8	010506012		法兰螺栓M6×12	FLANGE BOLT M6×12	8				

9	010508016		法兰螺栓M8×16	FLANGE BOLT M8×16	2				
---	-----------	--	-----------	-------------------	---	--	--	--	--

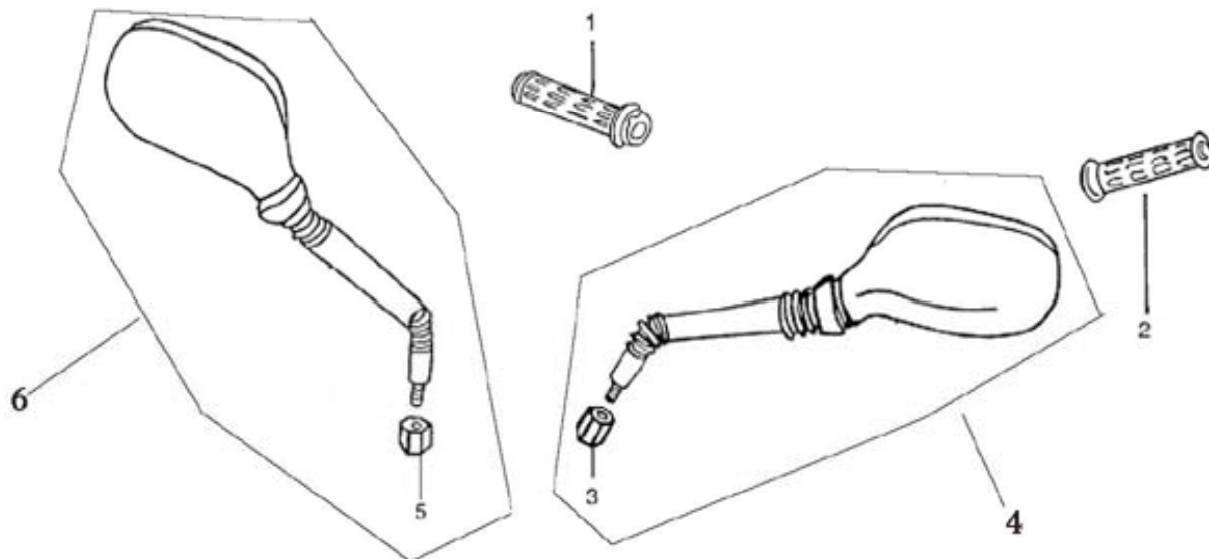
F-12
排气消声器
EX • MUFFLER



F-12 排气消声器-EXHAUST MUFFLER

序号 REF NO.	技术代码 (PART NO.)	物料编码 (PART NO.)	名称	DESCRIPTION	单台用量 REGD NO.				备注(组件名称或代号) REMARK (COMPONENT NAME OR CODE)
1	11516		消声器密封垫	GASKET EX PLPE	1				
2	020308000A		法兰螺母M8	FLANGE NUT M8	2				
3	61006-02	61006-02	消声器后部(欧II白)	EXHAUST SILENCER (II)	1				连前部的价格
4	61006-03		消声器卡圈	SILENCER BLOCK RING	2				
5	61006-04		消声器橡胶圈	SILENCER BLOCK RING RUBBER	2				
	61006A-02		消声器后部(欧III)	EXHAUST SILENCER (III)	1				连前部的价格
	61006D-02		消声器后部(白,无触媒)	EXHAUST SILENCER	1				连前部的价格
6	010510025A		法兰螺栓M10X1.25X25	FLANGE BOLT M10X1.25X25	1				
7	61006A-01		消声器前部(不带补气)	EXHAUST SILENCER	1				

F-14
后视镜
MIRROR COMP

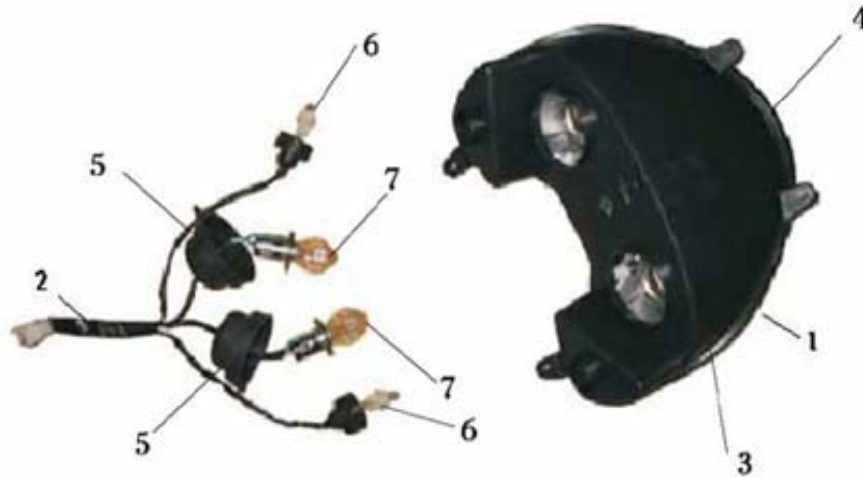


F-14 后视镜-MIRROR COMP.

序号 REF NO.	技术代码 (PART NO.)	物料编码 (PART NO.)	名称	DESCRIPTION	单台用量 REGD NO.			备注(组件名称或代号) REMARK (COMPONENT NAME OR CODE)
1	61505		油门转把(二代)	RIGHT HANDLE COVER	1			
2	61504		左把套二代	LEFT HANDLE COVER	1			
3	61710-01-02	61710-01	左后视镜调节螺母	LEFT BACK SCOPE ADJUST NUT	1			右后视镜-RIGHT BACK SCOPE
4	61710-01		左后视镜(双色)E-MARK	LEFT BACK SCOPE	1			
5	61710-02-02	61710-02	右后视镜调节螺母	RIGHT BACK SCOPE ADJUST NUT	1			右后视镜-RIGHT BACK SCOPE
6	61710-02		右后视镜(双色)E-MARK	RIGHT BACK SCOPE	1			
	61710B-01		左后视镜(焊将)DOT	LEFT BACK SCOPE	1			
	61710B-02		右后视镜(焊将)DOT	RIGHT BACK SCOPE	1			
	61710A-01		左后视镜(普通)	LEFT BACK SCOPE	1			

61710A-02		右后视镜(普通)	RIGHT BACK SCOPE	1				
-----------	--	----------	------------------	---	--	--	--	--

**F-15
前大灯
HEADLIGHT**

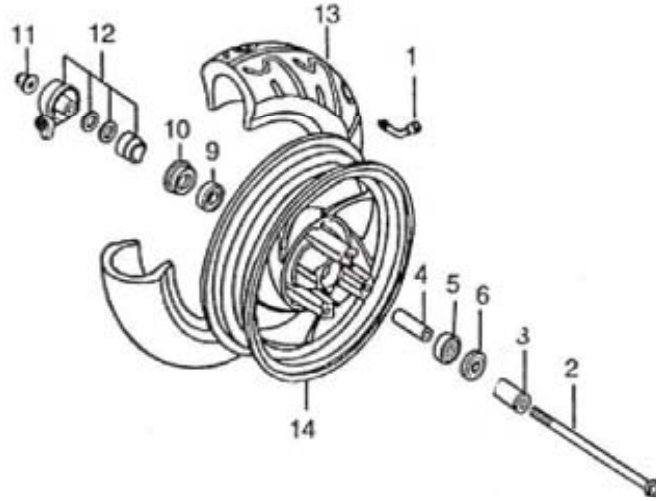


F-15 前大灯-HEAD LIGHT

序号 REF NO.	技术代码 (PART NO.)	物料编码 (PART NO.)	名称	DESCRIPTION	单台用量 REGD NO.			备注(组件名称或代号) REMARK (COMPONENT NAME OR CODE)
1	61302B		前照灯(二代普通)	FRONT HEADLIGHT	1			
	61302C		前照灯(普通E27)	FRONT HEADLIGHT	1			
	61302A		前照灯(一代)	FRONT HEADLIGHT	1			
1	61302	61302	前大灯(二代认证)	FRONT HEADLIGHT	1			前照灯-FRONT HEADLIGHT
2	61302-03		灯座线束	LAMP HOLDER WIRING HARNESS	1			
3	61302-04		灯壳	LIGHT SHELL	1			
4	61302-05		灯罩	CHIMNEY	1			
5	61302-06		防尘罩	DUSTPROOF COVER	2			
7	61302-01		大灯泡12V18W	BULB 12V18W	2			
6	61302-02		位置灯泡12V5W	BULB 12V5W	2			
7	61302-01		大灯泡12V18W	BULB 12V18W	2			

6	61302-02		位置灯泡12V5W	BULB 12V5W	2				
---	----------	--	-----------	------------	---	--	--	--	--

F-16
前轮
FRONT WHEEL

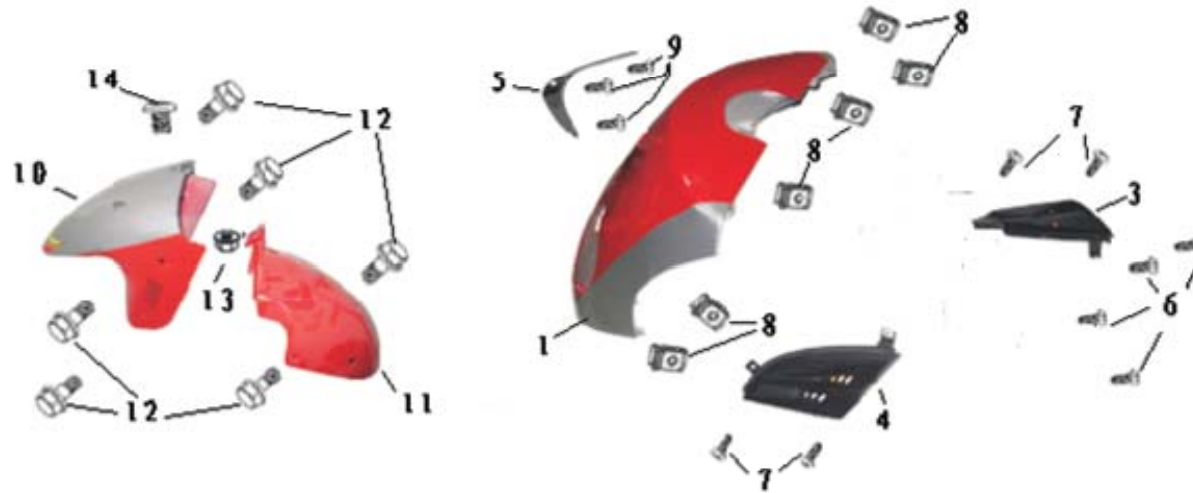


F-16 前轮-FRONT WHEEL

序号 REF NO.	技术代码 (PART NO.)	物料编码 (PART NO.)	名称	DESCRIPTION	单台用量 REGD NO.				备注(组件名称或代号) REMARK (COMPONENT NAME OR CODE)
1	47503		气门嘴	VALVE MOUTH	1				
2	570212250A		前轮轴	FRONT WHEEL AXIS	1				
3	550112020A		前轮轴套	FRONT WHEEL AXIS COVER	1				
14	47122	47122	前铝轮	FRONT ALUMINUM WHEEL	1				前铝轮-FRONT ALUMINUM WHEEL
4	47122-04		前轮内隔套	FRONT WHEEL SLEEVE	1				
5	GB276-89		轴承6201	BEARING 6201	1				
6	47122-02		油封	OIL SEAL	1				
9	GB276-89		轴承6201	BEARING 6201	1				
10	47122-03		油封	OIL SEAL	1				
11	020412000A		法兰螺母M12	FLANGE NUT M12	1				
12	47123		蜗轮	TURBINE	1				

13	47501		真空胎130/60-13认证	FRONT WHEEL	1				
----	-------	--	----------------	-------------	---	--	--	--	--

F-17
前面板
COVER FR



F-17 前面板-COVER FR

序号 REF NO.	技术代码 (PART NO.)	物料编码 (PART NO.)	名称	DESCRIPTION	单台用量 REGD NO.				备注(组件名称或代号) REMARK (COMPONENT NAME OR CODE)
1	61401		前面板(KQ)二代	FRONT PANEL	1				
3	61442		前右通风板(KQ)二代	FRONT RIGHT VENTILATION BOARD	1				
4	61441		前左通风板(KQ)二代	FRONT LEFT VENTILATION BOARD	1				
5	61440		前面板装饰条(铬)	FRONT-PANEL ADORNMENT (Gr)	1				
6	040142012B		自攻螺钉ST4.2×12	SELF-ATTACK BOLT ST4.2×12	4				
7	040148016B		自攻螺钉ST4.8×16	SELF-ATTACK BOLT ST4.8×16	4				
8	520304000		夹片	CLIPS	2				
9	040142012B		自攻螺钉ST4.2×12	SELF-ATTACK BOLT ST4.2×12	3				
10	47406		前挡泥A(KQ)	FRONT FENDER A	1				
11	47407		前挡泥B(KQ)	FRONT FENDER B	1				
12	030306012A		十字盘头螺栓M6×12	CROSS PAN HEAD BOLT M6×12	6				
13	020306000		法兰螺母M6	FLANGE NUT M6	1				

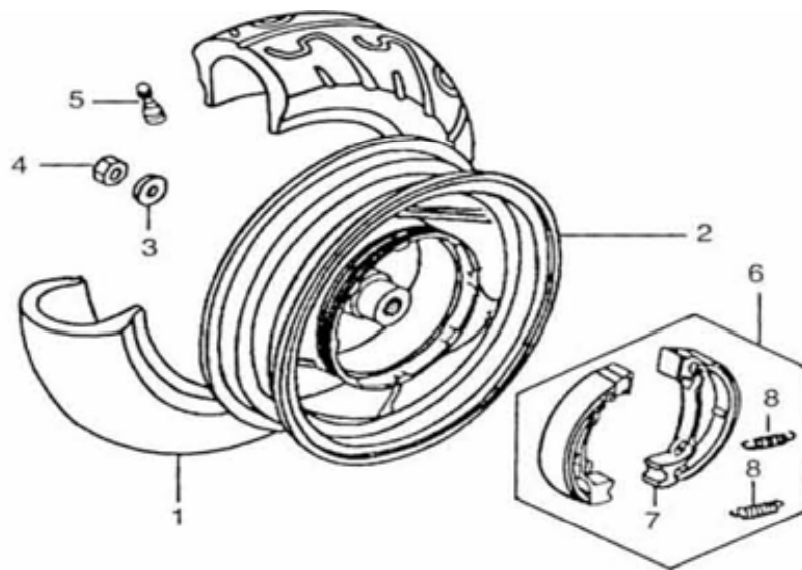
F-20
脚踏板
FOOTREST



F-20 脚踏板-FOOTREST

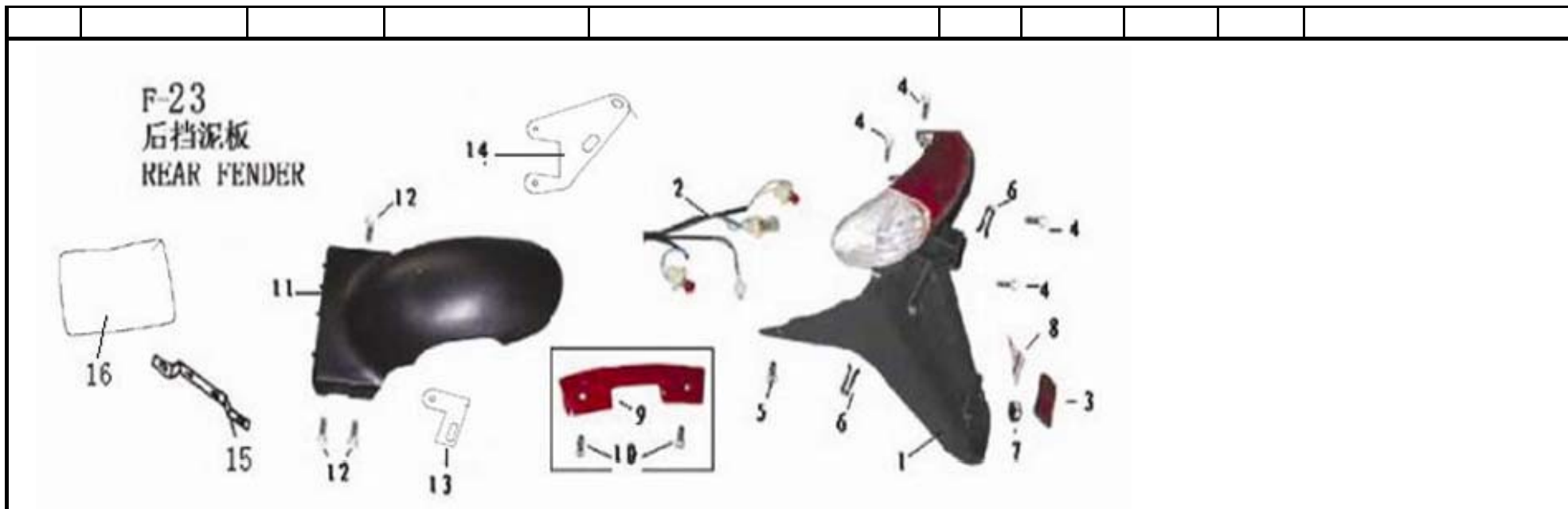
序号 REF NO.	技术代码 (PART NO.)	物料编码 (PART NO.)	名称	DESCRIPTION	单台用量 REGD NO.				备注(组件名称或代号) REMARK (COMPONENT NAME OR CODE)
1	61419		脚踏板	PEDAL PLATE	1				
2	61421		蓄电池盒盖	ACCUMULATOR BOX COVER	1				
3	520304000		夹片	CLIPS	11				
4	010506016		法兰螺栓M6×16	FLANGE BOLT M6×16	2				
5	010506035		法兰螺栓M6×35	FLANGE BOLT M6×35	2				
6	040148016B		自攻螺钉ST4.8×16	SELF-ATTACK BOLT ST4.8×16	2				
7	61454		后右脚蹬	RIGHT BACK FOOT STEP	1				
8	61453		后左脚蹬	LEFT BACK FOOT STEP	1				
9	61508		脚踏皮	PEDAL RUBBER	1				

F-21
后轮
REAR WHEEL



F-21 后轮-REAR WHEELT

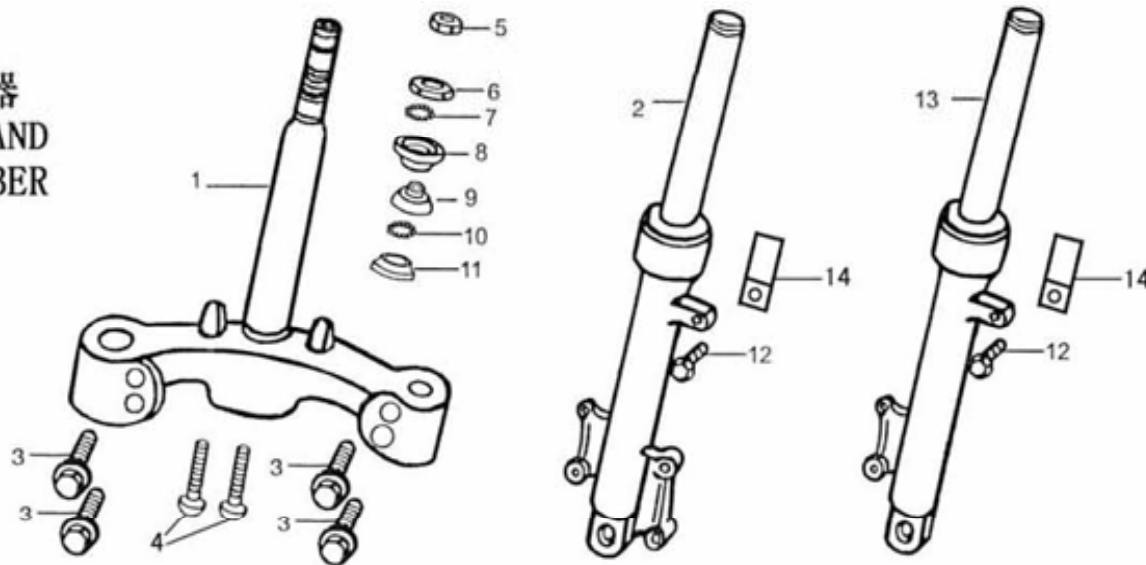
序号 REF NO.	技术代码 (PART NO.)	物料编码 (PART NO.)	名称	DESCRIPTION	单台用量 REGD NO.				备注(组件名称或代号) REMARK (COMPONENT NAME OR CODE)
1	47501		真空胎130/60-13认证	BACK WHEEL	1				
2	47138		后铝轮(后鼓刹)	BACK ALUMINUM WHEEL	1				
	47138A		后铝轮(后碟刹)	BACK ALUMINUM WHEEL	1				
3	550517020		垫圈16	GASKET 16	1				
4	020416000D		自锁螺母M16	SELF-LOCK NUT M16	1				
5	47503		气门嘴	VALVE MOUTH	1				
6	47137		后制动蹄块130	BACK BRAKE SHOE	1				
7	47137-01	47137	制动蹄块	BRAKE SHOE	1				后制动蹄块130-BACK BRAKE SHOE
8	47137-02		蹄块弹簧	SHOES SPRING	2				



F-23 后挡泥板-REAR FENDER

序号 REF NO.	技术代码 (PART NO.)	物料编码 (PART NO.)	名称	DESCRIPTION	单台用量 REGD NO.			备注(组件名称或代号) REMARK (COMPONENT NAME OR CODE)
1	61305	61305	尾灯组件二代认证	TAILLIGHT	1			尾灯组件-TAILLIGHT
2	61305-01		尾灯电缆	TAILLIGHT CABLE	1			
	61305B		后尾灯(普通)	TAILLIGHT	1			
3	11309A		后反射器	BACK REELECTOR	1			
4	010506012		法兰螺栓M6×12	FLANGE BOLT M6×12	4			
5	040148016A		自攻螺钉ST4.8×16	SELF-ATTACK BOLT ST4.8×16	2			
6	520304000		夹片	CLIPS	2			
7	020305000		法兰螺母M5	FLANGE NUT M5	1			
8	11723		后挡泥板警告贴花	BACK WARNING MARK	1			
9	61450		后护条(KQ)	BACK PROTECTION BAR	1			

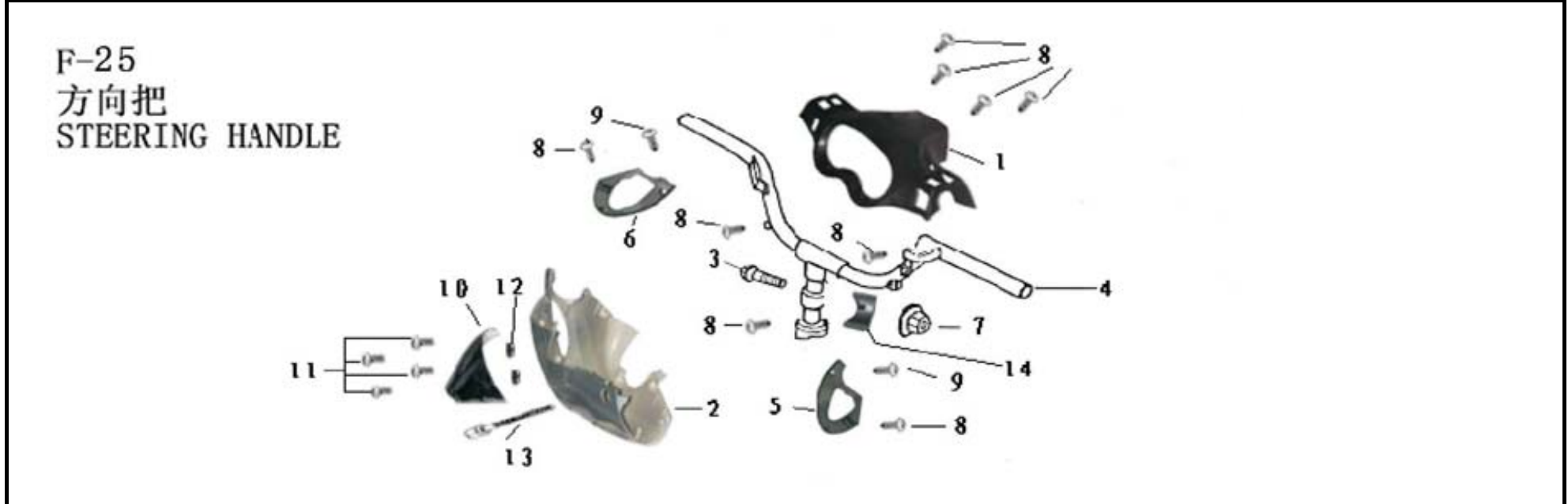
F-24
方向柱和前减震器
STEERING STEM AND
FR SHOCK ABSORBER



F-24 方向柱和前减震器-STEERING STEM AND FR SHOCK ABSORBER

序号 REF NO.	技术代码 (PART NO.)	物料编码 (PART NO.)	名称	DESCRIPTION	单台用量 REGD NO.				备注(组件名称或代号) REMARK (COMPONENT NAME OR CODE)
1	61108		下联板(方向柱、前叉)	DIRECTION AL POST	1				
2	47110-01		左前减震器	LEFT FRONT ASBORBER	1				
3	010510045		法兰螺栓M10×45	FLANGE BOLT M10×45	4				
4	47110-02		右前减震器	RIGHT FRONT ABSORBER	1				
5	61115		锁紧螺母	LOCK TIGHT NUT	1				
6	61113		上挡圈	UPPER BLOCK RING	1				
7	61117		上滚珠轴承	UPPER BALL BEARING	1				
8	61111		上轴碗	UPPER AXIS BOWL	1				
9	61112		下轴碗	LOWER AXIS BOWL	1				
10	61118		下滚珠轴承3200	LOWER BALL BEARING	1				

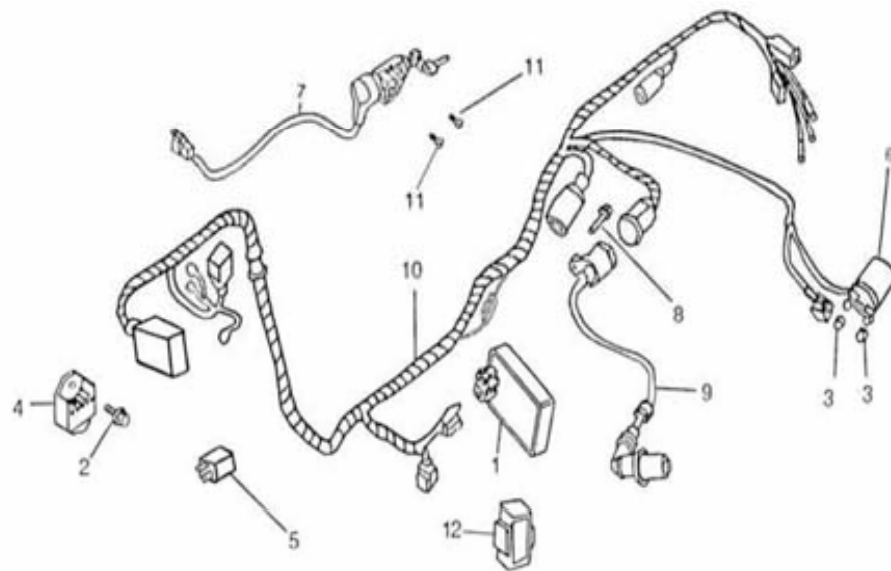
11	61114		下挡圈	LOWER BLOCK RING	1				
----	-------	--	-----	------------------	---	--	--	--	--



F-25 方向把-STEERING HANDLE

序号 REF NO.	技术代码 (PART NO.)	物料编码 (PART NO.)	名称	DESCRIPTION	单台用量 REGD NO.				备注(组件名称或代号) REMARK (COMPONENT NAME OR CODE)
1	61412		仪表罩	INSTRUMENT COVER	1				
2	61405		导流罩(KQ)二代	AIR GUIDE SLEEVE	1				
3	010510050		法兰螺栓M10×50	FLANGE BOLT M10×50	1				
4	61104		手把(后鼓)	HANDLE JOINTING COMPONENTS	1				
	61104A		手把(双碟)	HANDLE JOINTING COMPONENTS	1				
5	61436		左手把小盖(KQ)二代	LEFT HANDLE PROTECTION COVER	1				
6	61437		右手把小盖(KQ)二代	RIGHT HANDLE PROTECTION COVER	1				
7	020310000A		自锁螺母M10	SELF-LOCK NUT M10	1				
8	040142013B		自攻螺钉ST4. 2×13	SELF-ATTACK BOLT ST4. 2×13	9				

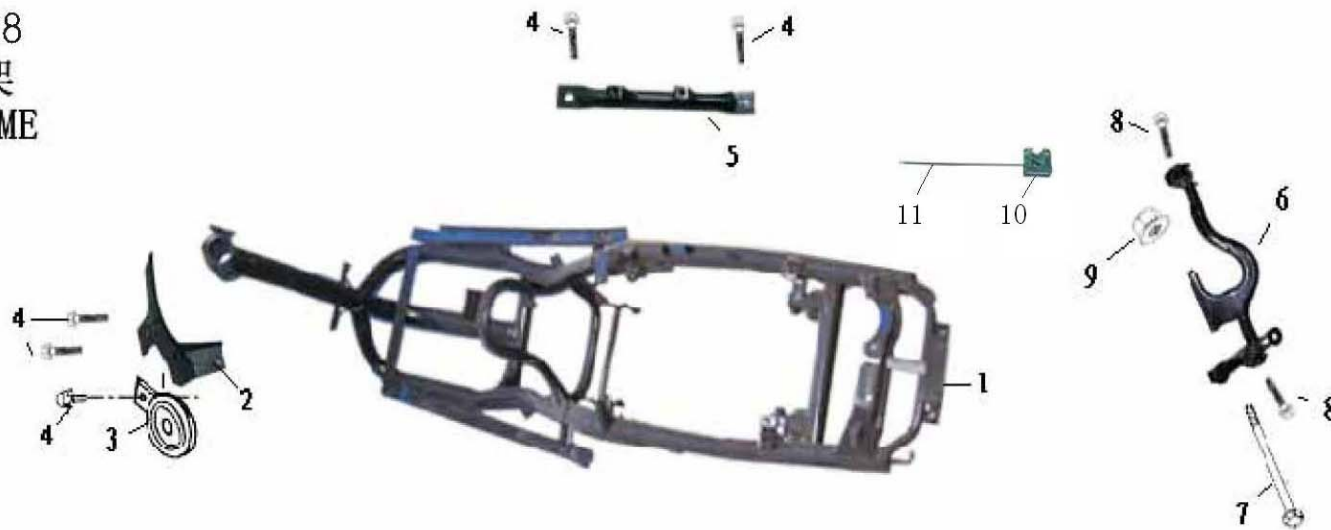
F-27 电缆 CABLE



F-27 电缆-CABLE

序号 REF NO.	技术代码 (PART NO.)	物料编码 (PART NO.)	名称	DESCRIPTION	单台用量 REGD NO.			备注(组件名称或代号) REMARK (COMPONENT NAME OR CODE)
1	61322	1271021101	点火器	CDI IGNITER	1			点火器-CDI IGNITER 发动机厂领
12	61321-05		点火器皮套	IGNITER LEATHER COVER	1			
2	010506012		法兰螺栓M6×12	FLANGE BOLT M6×12	1			
3	020306000		法兰螺母M6	FLANGE NUT M6	2			
4	47323		调压整流器	PRESSURE-ADJUST RECTIFIER	1			
	11323		调压整流器	PRESSURE-ADJUST RECTIFIER	1			DOT/EPA
5	11324A		闪光器(方)认证	FLASHER	1			
	11324		闪光器(方)普通	FLASHER	1			
6	11326		继电器	START RELAY	1			

F-28
车架
FRAME



F-28 车架—FRAME

序号 REF NO.	技术代码 (PART NO.)	物料编码 (PART NO.)	名称	DESCRIPTION	单台用量 REGD NO.				备注(组件名称或代号) REMARK (COMPONENT NAME OR CODE)
1	61101		车架	FRAME JOINTING COMPONENTS	1				
2	61155		喇叭支架	HORN BRACKET	1				
3	61311		大喇叭(认证)12V2A	HORN	1				
	11311		喇叭(普通)12V2A	HORN	1				
4	010506016		法兰螺栓M6×16	FLANGE BOLT M6×16	5				
5	61157		后置物箱支架	MEDIUM STORAGE COMPARTMENT BRACKET	1				
6	61144		吊架	HANGER	1				
7	570210188		吊架轴M10×1.25×182	HANGER AXLE M10×1.25×182	1				
8	010510050		法兰螺栓M10×50	FLANGE BOLT M10×50	2				
9	020310000A		法兰螺母M10	FLANGE NUT M10	1				
10	61334		座垫锁板	SEAT CUSHION LOCK BASE	1				

其它部件--OTHER PARTS									
序号 REF NO.	技术代码 (PART NO.)	物料编码 (PART NO.)	名称	DESCRIPTION	单台用量 REGD NO.				备注(组件名称或代号) REMARK (COMPONENT NAME OR CODE)
2	61119-01-03		前制动手柄	FRONT BRAKING HANDLE	1				
3	61152B		后轮连接板(双碟刹)	REAR WHEEL CONNECTING BOARD	1				
4	61152		后轮连接板(铝筒)	REAR WHEEL CONNECTING BOARD	1				
5	61152A		后轮连接板(铁筒)	REAR WHEEL CONNECTING BOARD	1				
6	61439		碟刹器加油孔盖(KQ)	BRAKING OIL COVER (KQ)	1				
7	61424		后置物箱底盖	COMPARTMENT	1				
8	61709		后尾箱	REAR BOX	1				
9	61335		防盗器(遥控空启动)	SECURITY	1				
10	61335A		防盗器(不带遥控启动)	SECURITY	1				
11			发动机(光机加长157QMJ)	ENGINE (157QMJ)	1				
12			发动机(光机扩缸125QMJ-A)	ENGINE 125QMJ-A)	1				